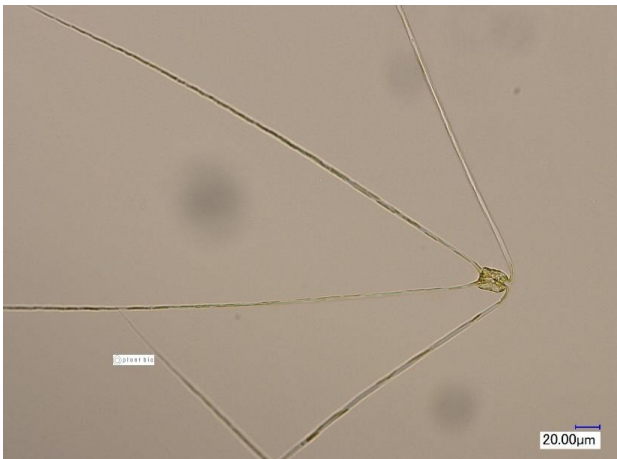
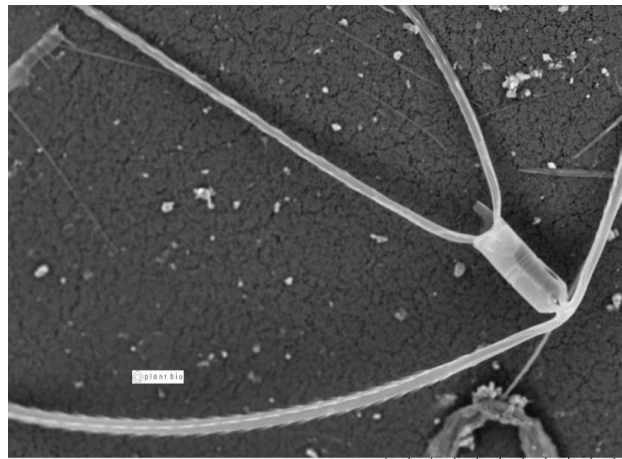


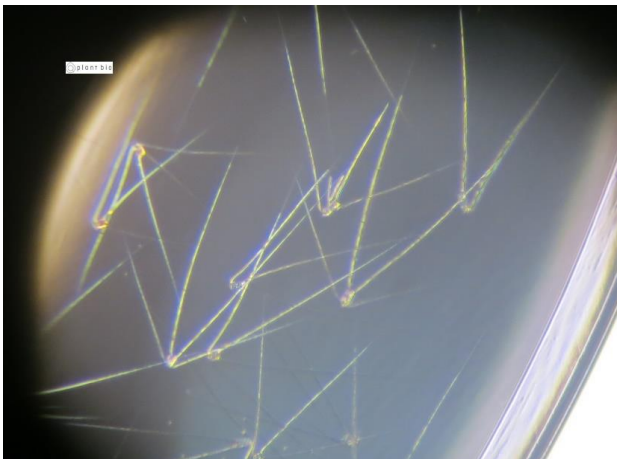
Chaetoceros peruvianus



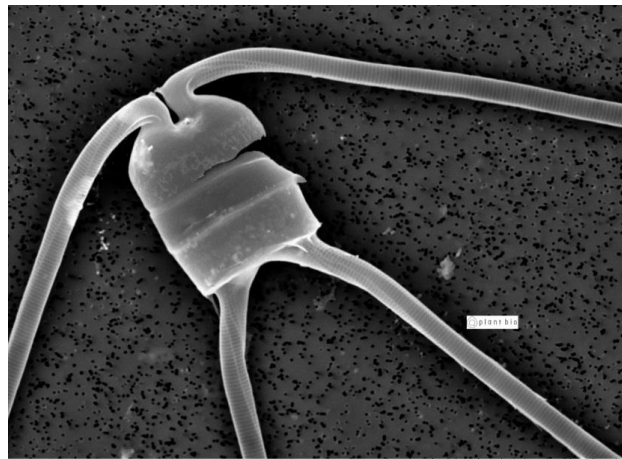
生細胞（光学顕微鏡）



Miniscope0788 2018/11/24 13:08 NL D4.0 x600 100 μm
生細胞（走査電顕）



培養細胞（光顕：培養Well-plate）



Miniscope0868 2018/11/29 17:35 HL D4.4 x2.0k 30 μm
培養細胞（走査電顕）

遺伝子解析結果

[DDBJ](#)

[NCBI](#)