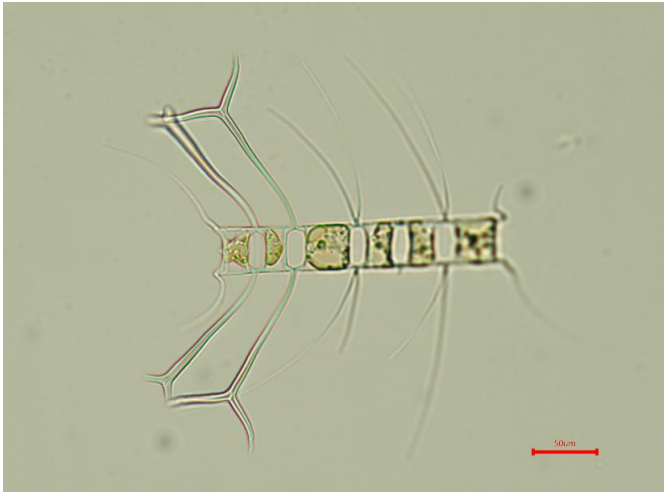
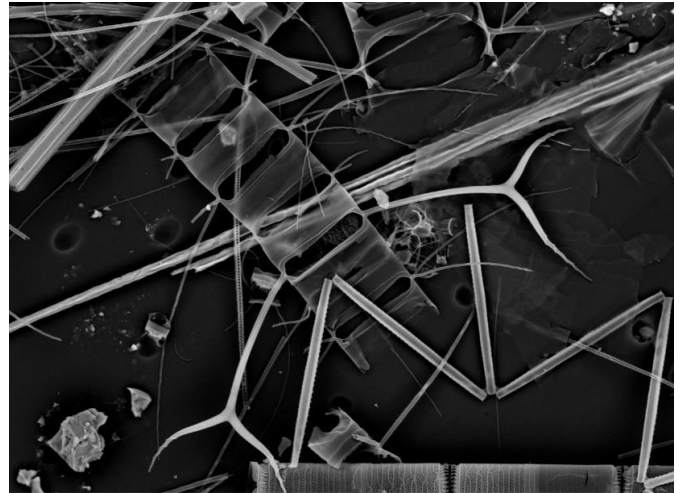


*Chaetoceros messanensis*



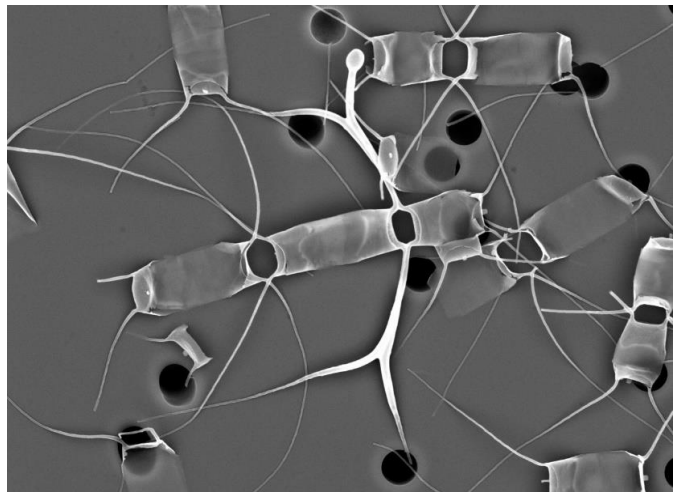
生細胞 (光学顕微鏡)



生細胞 (走査電顕)



培養細胞 (光顕：培養Well-plate)



培養細胞 (走査電顕)

遺伝子解析結果

[DDBJ](https://www.ddbj.nig.ac.jp/)

[NCBI](https://www.ncbi.nlm.nih.gov/)